



ANNUAL REVIEW 2016-2017

Contents

- 1 Our Mission
- 2 Our Values
- 4 Letter from our Chairman and Chief Executive
- 5 Expanding our Reach to Young Adults
- 6 Our Impact in 2016 – 2017
- 8 Our Global Reach
- 10 Flying Children for Urgent Treatment
- 12 Missions Overseas
- 16 Training Overseas
- 18 Developing Infrastructure
- 19 Research and Outreach in Rural Communities
- 20 Fundraising
- 25 Our Volunteers
- 26 Accounts
- 28 Governance

Our Mission

“Our mission is to develop and support sustainable clinical and research cardiac centres for the treatment of children and young people with heart diseases. We do this in countries where the facilities for such treatments are unavailable.”

Professor Sir Magdi Yacoub OM, FRS
Founder and President of Chain of Hope



Our Values

Quality

We endeavour to provide the highest level of service through our experienced and world class medical professional workforce.

Impartiality

We must always act in a non-discriminatory way and ensure that all patients are given equal rights to treatment irrespective of race, religion, gender or creed.

Accountability

We strive to provide accountability throughout our organisation, implementing and reviewing good governance structures to ensure fair and transparent decision-making processes are in place.

Compassion

We always aim to treat all with the care and respect that we would want to be shown.

Letter from our Chairman and Chief Executive

Dear Friends,

We are delighted to provide you with this summary of our work for the period from 1st April 2016 to 31st March 2017.

During this period the charity continued to grow its activities, helping more patients around the world suffering from heart disease.

Our financial growth of nearly 20% enabled us to mobilise more missions to treat patients in the developing world. We carried out a total of 18 missions compared to 14 in the previous year. We were also able to continue our work treating refugees and our other flagship projects. These achievements are largely thanks to the immense generosity of our loyal donors.

The number of patients directly benefitting from our work also increased. Our healthcare professionals performed an incredible 321 highly complex cardiac procedures compared to 284 procedures in the previous year.

Overall, our work training healthcare professionals and establishing cardiac services in collaboration with our many partners has helped nearly 20,000 patients to date. This is the true legacy of our supporters' generosity.

All of this work is heavily reliant on the wonderful healthcare professionals and the many other volunteers involved in Chain of Hope. One of our unique factors is the outstanding network of volunteers which enables us to carry out our vital work to help children and young adults with heart disease.

We owe all of these volunteer surgeons, physicians and nurses an enormous debt of gratitude, as well as our amazing host families, interpreters and committees.



Dr Gavin Wright listens to baby Careese's heart.

Dr Gavin Wright
Chairman of the Trustees



Emma Scanlan with Milva before her heart surgery in Mozambique.

Emma Scanlan
Chief Executive Officer

Expanding our reach to Young Adults

“The Chain of Hope commitment to children extends beyond the age of 18 with a view to seeing them realise their dreams.”

Professor Sir Magdi Yacoub OM, FRS

An essential part of our work is to monitor our patients post-surgery as they grow into adulthood and make a contribution back to society.

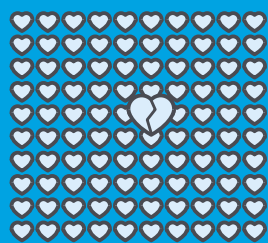
Following up on our patients has become a key objective for the charity in recent years to ensure our work has a long-term impact.



Professor Yacoub meets former patient Chantelle at a Chain of Hope Outreach Clinic.

One of the first children we helped was three year old Chantelle who was suffering from a very complex heart defect. Chantelle is pictured here 20 years later with Professor Yacoub at one of our follow-up clinics in Jamaica. She is now a healthy young woman about to give birth to a child of her own.

Mending Little Hearts: 1st April 2016 – 31st March 2017



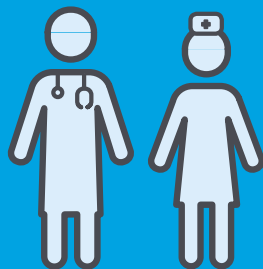
1

Child in Every 100 is Born with a Heart Defect



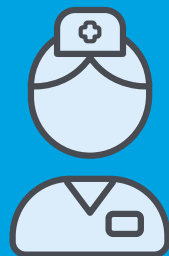
16

Countries Impacted by our work this year



132

Medical Professionals Trained



356

Volunteer Healthcare Professionals



£943,400

Spent on Missions



18

Missions Carried Out



£50,000

Average Cost of a Mission



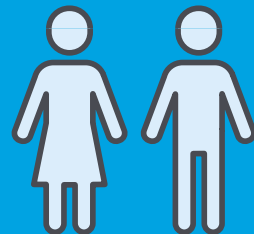
321

Procedures



281

Procedures Performed on Children



40

Procedures Performed on Adults



£72,932

Spent on Research



£5,000

Average Cost of Saving a Life



50

Volunteer Host Families, Drivers, Interpreters and Child Support Volunteers



63

Volunteer Board Members and Committee Members

Our Global Reach

Chain of Hope collaborates with hospitals and medical teams across the globe. Since our inauguration in 1996 we have worked with 43 countries to save the lives of children in need.

PARTNERING WITH THE USA

We partnered with a team from Johns Hopkins All Children's Hospital, Florida to provide life-saving heart surgery to 10 children in Jamaica during March 2017.



TREATING PATIENTS FROM HAITI

We flew three year old Davidson from Port-Au-Prince to London for heart surgery at the Royal Brompton Hospital.



ECHO SCREENING IN THE GAMBIA

During our second outreach clinic to The Gambia we performed cardiac health checks on 107 children.



HELPING REFUGEES IN JORDAN

We continued our humanitarian project treating refugees predominantly from Syria, Iraq and the Palestinian Territories, using Jordan as a hub.



CARDIOLOGY CONFERENCE IN UGANDA

Over 150 cardiologists from 15 countries attended an Africa-focussed interventional cardiology conference held in collaboration with Chain of Hope as part of our aim to provide continuous mentorship to interventional cardiologists from hospitals across Africa.



MISSIONS TO ETHIOPIA

A total of nine missions to Ethiopia were sponsored and facilitated by Chain of Hope, resulting in over 150 procedures on Ethiopian patients in 2016 - 2017.



Flying Children for Urgent Treatment

“It is humbling to work with children like Hala who exhibit such a strong will to live.”



Three year old Hala from Gaza at the Royal Brompton Hospital, with Lisa Yacoub, International Child Referral Programme Manager.

“The Child Referral Team have over 20 years’ experience of organising for children to fly to partner hospitals across the world for emergency treatment. In this financial year we flew 44 patients from 11 countries for life-saving cardiac care.

Each time we treat a patient it is thanks to a long chain of volunteers. Our host families who open their homes to children and their guardians whilst they are in the UK for surgery, are at the heart of this chain.

Looking back over the years, little Hala’s case is particularly memorable. Hala was born with a hole in her heart and was found sheltering in a UN school in Gaza after her house had been blown

up. Working with the Palestine Children’s Relief Fund, International Red Cross and Red Crescent in Jerusalem, we managed to fly Hala to the UK during a 72-hour ceasefire. During the flight, Hala lost consciousness and was resuscitated by volunteer surgeon Mr David Nott. When they arrived, we organised for an ambulance to take Hala straight to the Royal Brompton Hospital where she underwent open heart surgery, sponsored by Chain of Hope. It was a privilege to help Hala who was a resilient and brave little girl facing desperate circumstances.”

Lisa Yacoub
International Child Referral Programme Manager

Fatoumatta from The Gambia

Fatoumatta’s heart defect could not be treated in The Gambia where there are currently limited paediatric cardiology services.

In order to address this gap in service, Chain of Hope sends experienced volunteer cardiologists to The Gambia to help diagnose and manage patients. In May 2016, Dr Giselle Rowlinson found that three year old Fatoumatta had a hole in her heart and six months later we flew her to the UK. Fatoumatta and her mother were welcomed at the airport by one of our host families, Robin and Sophie Matthews and their three young sons.

Little Fatoumatta was admitted to our partner hospital The Harley Street Clinic shortly after she arrived. She underwent a procedure in the catheter laboratory in the safe hands of Consultant Cardiologist Dr Alan Magee, who closed the hole in her heart.

It is likely that because of this treatment, Fatoumatta will not need any further cardiac intervention for the rest of her life.



Missions Overseas

In 2016 – 2017 we carried out 18 missions, mobilising teams of medical volunteers to treat children in war-torn and developing countries across the globe.



Saba from Syria



Besufekad from Ethiopia



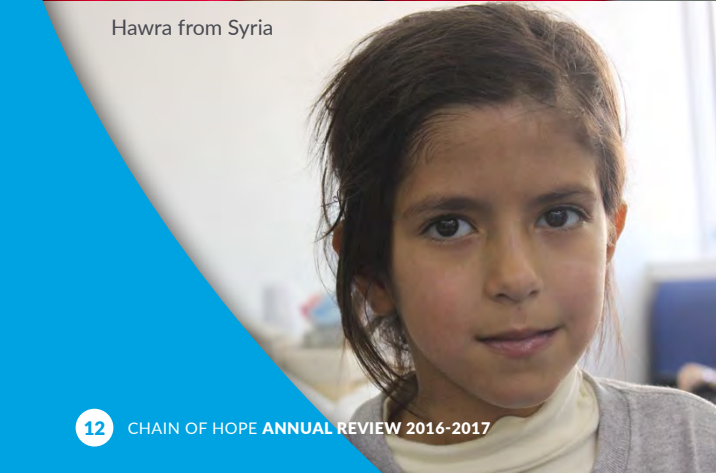
Nour treated in Jordan



Jonas from Mozambique



Raghad from
The Palestinian Territories



Hawra from Syria



Ms Carin Van Doorn and Dr Estefane Sozinho
operate on a patient



Aeshah from Syria

Mission Focus

Treating Refugees

Chain of Hope continued its efforts to respond to the refugee crisis in the Middle East. We increased the number of humanitarian missions in Jordan to treat refugee children, from a pilot mission in the previous financial year, to four missions in partnership with international NGOs in this financial year.



Dr Mark Turrentine (far right), Dr. Khaled Salaymeh (right) and Dr Gavin Wright (left) in Jordan.

Chain of Hope funded more than 45 procedures over the course of four missions in Amman, all with the aim of treating children whose lives have so sadly been affected by the current political situation in the region. To achieve this, we partnered with Gift of Life International, Gift of Life Amman, Riley Children's Hospital and Al Khalidi Hospital.

All four of the missions were led by Consultant Cardiac Surgeon, Dr Mark Turrentine from Riley Children's Hospital, Indianapolis, who has been donating his time for the past 10 years to help children in this region.

"It is a privilege to work with Chain of Hope to help save the lives of refugee children who would otherwise have no access to vital heart surgery."

Dr. Mark Turrentine
Riley Children's Hospital, Indianapolis, USA

Shadi from Syria

Patients included two year old Shadi from Syria who was born with a hole in his heart. Little Shadi and his family were forced to flee from their home despite Shadi's life-threatening heart problem. The family travelled by foot, living in the desert for five months before reaching a refugee camp in Jordan, where Chain of Hope was able to reach him.

Shadi's case was referred to our local correspondent Dr Khaled Salaymeh who added him to the list of patients for our up-coming mission. He was placed in the expert hands of Dr Mark Turrentine who carried out his vital surgery. Shadi has now fully recovered.



Training Overseas

Training Future Generations in Partnership with the Aswan Heart Centre

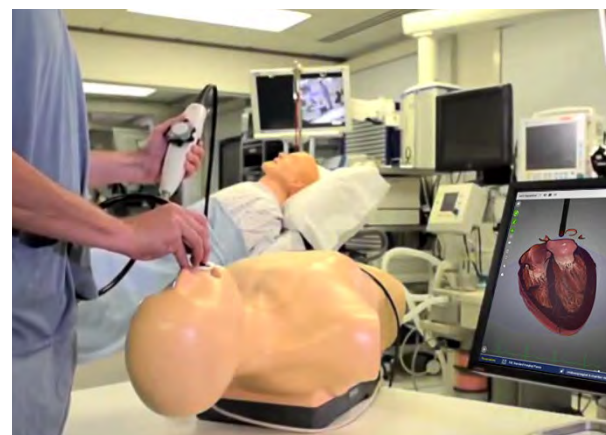


Members of the Cardiac Team at the Aswan Heart Centre using the Echo Simulator.

Chain of Hope is committed to continued education and development of cardiac centres around the world. In 2016 – 2017 part of this commitment was a donation of a state-of-the-art Echo Simulator to the Aswan Heart Centre.

Utilising a specialist mannequin, the Echo Simulator allows for simulated imaging of a virtual heart which can be programmed to display a specific congenital or rheumatic defect. This allows trainees to safely practise performing an echo before they are required to diagnose and treat live patients. Trainees can practise both transthoracic echo, in which the probe is placed on the chest or abdomen, and transoesophageal echo, in which the probe is passed down the throat.

The Echo Simulator is now being used by the Aswan Heart Centre to train young cardiologists from Egypt and all over Africa.



The HeartWorks Echo Simulator.

Echo Training in Mozambique

Chain of Hope organised an Echo Training Workshop for 30 delegates led by Professor Jan Marek from Great Ormond Street Hospital.

Professor Marek is also the Director of Echo Training Courses at University College London. Chain of Hope was thrilled to invite Professor Marek to replicate these renowned training courses at the Maputo Heart Institute in 2016. Professor Marek trained enthusiastic young cardiologists in the complex skill of paediatric cardiology through a combination of both didactic and practical teaching sessions.

The surgical team in Mozambique is now treating 174 patients a year.



Professor Jan Marek echos a patient with the team from Instituto do Coração, Maputo.

Training Nurses

Every year we support the professional development of nurses globally. In Summer 2016, Chain of Hope facilitated and sponsored a professional development programme in London for six nurses from the Aswan Heart Centre.

The nurses attended the 'Introduction to Congenital Heart Disease' course run by Great Ormond Street Hospital, the Royal Brompton Hospital and Evelina London Children's Hospital.

This course which was held at the Institute of Child Health, part of University College London, provided these already skilled nurses with the opportunity to enhance their learning.

The six nurses from the Aswan Heart Centre all specialise in different areas of cardiac nursing, including intensive care, theatres and catheter laboratory.



A lecture attended by the Aswan Heart Centre nurses.

Developing Infrastructure

Chain of Hope provides specialist equipment for the global development of cardiac units as well as delivering essential maintenance and expertise.

Establishing Catheter Laboratories

Catheter laboratories are used for the treatment and diagnosis of heart conditions. There are many benefits of treatment in a catheter laboratory as heart defects can be corrected without the need for open heart surgery. This means that children will not be left with a surgical scar and will experience a much faster recovery.

During 2016 – 2017, the Ministry of Foreign Affairs in Egypt donated a brand new catheter laboratory to the Cardiac Centre Ethiopia. Chain of Hope partnered with the Aswan Heart Centre to fund its installation and support its operation.

Children's catheter laboratory facilities will also soon be available for the young population of Jamaica and the surrounding islands. Chain of Hope purchased a brand new bi-plane catheter laboratory in 2016. The \$1.5 million piece of equipment was funded by Chain of Hope together with three other international charities: Gift of Life International, the Shaggy Make a Difference Foundation, and Rotary International. This bi-plane catheter laboratory will not only be the first of its kind in Jamaica, but in the wider region.



A catheter laboratory.



Heidi Hess from Gift of Life International and Rotary International with new equipment for the first paediatric cardiac centre in Jamaica.

Research and Outreach in Rural Communities

Rheumatic Heart Disease (RHD) continues to be a major cause of death and suffering in developing countries, affecting the lives of many thousands of children. Chain of Hope sponsored a follow-up prevalence study into RHD in Ethiopia



with the donation of a state-of-the-art portable echo machine. This ground-breaking study, carried out in collaboration with Jimma University and led by Professor David Phillips from Southampton University, is taking place in the rural community of Jimma. The first stage of this study showed a much higher incidence of RHD in rural areas compared to urban areas. This second phase aims to identify the reasons for this, with a focus on the effects of smoke exposure on the development of the disease.



Chain of Hope also purchased an echo machine to support the research of Paediatric Cardiologist, Ana Olga Mocumbi in rural Mozambique. Dr Mocumbi is investigating a form of heart disease known as Endomyocardial Fibrosis (EMF). The high-tech equipment provided by Chain of Hope allows for the vital follow-up of EMF patients, producing rare and valuable data on the disease.

Chain of Hope conducts outreach clinics around the world. In May 2016, we conducted an outreach clinic to The Gambia to perform follow-up checks on those previously treated by Chain of Hope and to diagnose children with suspected heart conditions. Consultant Paediatric Cardiologist, Dr Giselle Rowlinson from The Royal Brompton Hospital, screened an amazing 107 children in just one week.



Children seen at the Medical Research Council with the Chain of Hope team and local medical staff.



Dr Giselle Rowlinson teaches a local team member.

Fundraising



Christmas Carols

The Chain of Hope Carol Concert 2016 saw more than 300 guests in attendance and raised £10,593.

Our long-term Chain of Hope Ambassador and Actor Rupert Everett provided our guests with a beautiful reading of 'Twas the Night Before Christmas' alongside our Founder, Professor Sir Magdi Yacoub, Actor Steven Berkoff and Television Personality Kimberley Garner.



London Marathon

We were delighted to have seven runners support us in the London Marathon 2016.

Together they managed to raise an incredible £16,763 to support children with heart disease.



British London 10K

The British London 10K was a fantastic event for Chain of Hope, with 15 runners raising £9,270.

Christian, one of our wonderful supporters, was inspired to run after having cardiac surgery with Professor Yacoub in 2002 and by his own daughter's heart condition.

“To me, Chain of Hope has been a wonderful part of my life over these past years and a constant, happy reminder of the goodness in people and of the importance to focus on what's really important in life.”

Christian Schmidt, Chain of Hope fundraiser

Legacies: Leaving a Gift to Save a Life

“Leaving a legacy will help ensure the future sustainability of Chain of Hope, it will have a lasting impact long beyond our lifetimes.”

Professor Sir Magdi Yacoub OM, FRS



Baby Monica from Mozambique recovers after her heart surgery.

Gifts left in Wills continued to be a vital source of income for Chain of Hope. The generosity of our legacy donors helps us to save the lives of children in desperate need and we appreciate each and every gift, no matter the size.

We understand that loved ones are the first priority when making a will. Once friends and family have been considered, many people find that they are able to leave a gift to a cause they hold dear.

By leaving a legacy to Chain of Hope, our supporters enable us to treat more children, to train more medical teams and to build more cardiac facilities world-wide. Each gift helps us to make a positive and lasting impact on generations to come.

If you would like to have an informal discussion on leaving a gift to Chain of Hope in your will, please contact:

Lucy Baxter on
020 7351 1978 or email at
lucyb@chainofhope.org

Gala Ball 2016

On the 18th November 2016 we hosted our 14th annual Gala Ball at Grosvenor House with a phenomenal record of £2.6 million being raised to mend little hearts around the world.

We are extremely thankful for the generosity of all of our sponsors including Julius Baer, Mr Ghanim Al Saab, Mrs Sherine Sawiris, Mr Leonardo Gonzalez Dellan, Mr Emad Aziz and Mr Omar Selim.

Our Gala Ball would not be possible without our two incredible dedicated committees, the Ball Committee and Corporate Advisory Board.



Former patient, Haile speaks about his heart operation



Naomi Campbell



David Ginola



Rio Ferdinand and Lord Jeffrey Archer



Ambassadors Robert Pirès and Jessica Lemarié-Pirès



Rio Ferdinand, Mehmet Dalman, Emma Scanlan, Nicole Scherzinger, Professor Sir Magdi Yacoub, Sherine Sawiris



Countess Noemi Marone Cinzano and Professor Sir Magdi Yacoub

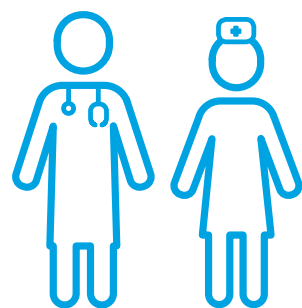


Nicole Scherzinger takes to the stage

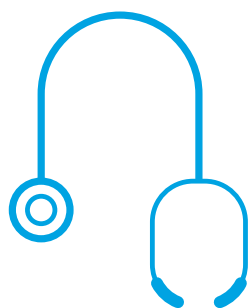
The Impact of Donations



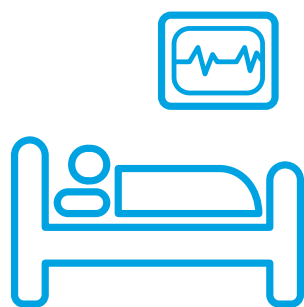
When you donate to Chain of Hope, the value of your donation is enhanced.



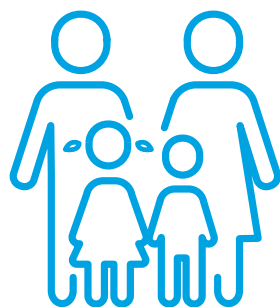
This is achieved by harnessing the time of highly skilled volunteers, such as our surgeons and nurses.



We also receive heavily subsidised donations of medical equipment from our partner organisations, to help bring costs down.



In addition, many of our partner hospitals donate or offer heavily reduced rates on our operations, such as stays in the Intensive Care Unit.



Donating to Chain of Hope is a wonderful investment in the communities that we support, both now and in the future.

Our Volunteers

Our network of volunteers is the foundation of everything we achieve. We are incredibly fortunate that world-class professionals give their time and expertise to the charity for free. This enables each donation to go further, making us more effective and efficient at what we do.



Volunteer Nurse Maura O'Callaghan with former patient Keane at a follow-up clinic in Jamaica.

Maura O'Callaghan, Advanced Children's Practitioner Nurse at Great Ormond Street Hospital, is one of many world-class professionals who dedicate their time to Chain of Hope.

Why did you begin volunteering for Chain of Hope?

I volunteered for the first time for Chain of Hope in 2005. I had been working for 13 years with children with cardiac disease and I wanted to use my skills to help a cause I really loved. The thing that appealed to me was the focus on transferring skills as well as saving lives. In this way, I could help many more children than just the ones I personally cared for.

What is your role in the charity?

In my role as Chair of the Chain of Hope Nursing Board and as a mission volunteer, I build up nursing skills and expertise in the countries we visit by developing training programmes and providing

hands-on teaching. Someone had to train me to make me the nurse I am today and to be able to pass that on is really special.

What do you most enjoy about volunteering?

Seeing children who have had open heart surgery get out of their beds in the Intensive Care Unit and physically walk to the General Ward is a phenomenal sight. I will never stop being amazed by it.

"I absolutely love volunteering for Chain of Hope – if I could do it full time, I would."

Accounts

1st April 2016 - 31st March 2017

In the 12 months to the end of March 2017, our total funds raised were £4.8 million: an increase of nearly 20% on the previous year.

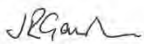
The Gala Ball continues to grow each year increasing our annual income significantly. This year the event produced over £2.6m of gross income, compared to £2.3m in the last financial year. This was a fantastic result reflecting the continuing support for the charity and its activities.

Expenditure for the year exceeded income by £0.74m, bringing total funds to £3.63m of which £2.28m is unrestricted. At the end of March 2017, the charity had restricted funds of £1.34m, chiefly held for vital equipment purchases.

During the period, a total of 321 cardiac procedures were undertaken compared to 284 in 2015 – 2016. Chain of Hope is in a very strong financial position and I have the uppermost confidence in its stability and longevity. My long term confidence is echoed by my fellow Trustees and we would like to take this opportunity to thank all those who have contributed to the charity's success this financial year.

From those on the staff team who have supported our CEO to achieve these financial results, to our volunteers, without which we would be unable to treat our patients and finally our donors who quite simply make our work possible by their generous and unwavering support.

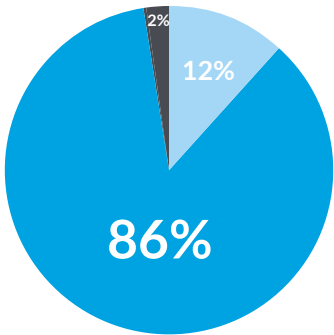
Thank you



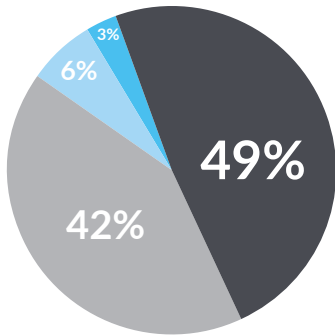
Richard Gawthorne,
Treasurer and Trustee of Chain of Hope.



Total Expenditure: £5.769m



Total Income: £4.826m



● Charitable Activities	86%
● Raising Funds	12%
● Governance and Administration	2%

● Fundraising Events	49%
● Gifts in Kind	42%
● Individual Gifts	6%
● Community, Trusts, Legacies and Others	3%

Statement of Financial Activities (Incorporating an income and expenditure account) For the year ended 31 March 2017

	Unrestricted £	Restricted £	31st March 2017 Total £	31st March 2016 Total £
Income from:				
Donations and legacies	548,767	3,432,093	3,980,860	3,279,491
Other trading activities	819,268	-	819,268	750,300
Investment	26,376	-	26,376	17,064
Total income	1,394,411	3,432,093	4,826,504	4,046,855
Expenditure on:				
Raising funds	435,649	291,900	727,549	576,949
Charitable activities:				
Overseas activities	291,308	3,788,432	4,079,740	1,815,769
International Child Referral Programme	152,653	809,259	961,912	923,865
Total expenditure	879,610	4,889,591	5,769,201	3,316,583
Net income (expenditure) for the year	514,801	(1,457,498)	(942,697)	730,272
Transfers between funds	(149,225)	149,225	-	-
Net income (expenditure) before other recognised gains and losses	365,576	(1,308,273)	(942,697)	730,272
Other recognised gains	200,721	-	200,721	45,859
Net movement in funds	566,297	(1,308,273)	(741,976)	776,131
Reconciliation of funds:				
Total funds brought forward	1,718,615	2,649,704	4,368,319	3,592,188
Total funds carried forward	2,284,912	1,341,431	3,626,343	4,368,319

Governance

Chain of Hope is guided by a number of boards and committees, whose members show great kindness and loyalty to furthering Chain of Hope’s mission and upholding our values of quality, impartiality, transparency and compassion.

The Trustee Board

The Trustee Board sets Chain of Hope’s strategic direction and ensures we achieve our charitable objectives.

The Trustee Board is responsible for the financial management of the charity and compliance with legal and statutory requirements. Each of our trustees brings a wealth of expertise and insight, meeting throughout the year to oversee our activity.

Prof Sir Magdi Yacoub OM, FRS President	
Prof Marc de Leval	Vice President
Dr Gavin Wright	Chairman
Mr Richard Gawthorne	Treasurer
Dr Alan Magee	
Ms Joanna McDwyer	
Mr Jonathan Danos, MBE	
Prof Victor Tsang	

“I have really enjoyed being involved in the development of Chain of Hope over the last five years. I wish the charity continued success in facilitating the treatment of an ever-increasing number of children across the world.”

Mr Richard Gawthorne, Treasurer



Mr Richard Gawthorne Goodbye and Thank You

We are sad to say goodbye to our long-standing Trustee and Treasurer, Richard Gawthorne whose commitment and dedication to Chain of Hope has been invaluable over the last five years. We are extremely grateful to Richard for the time and financial expertise he has given us and for the lasting positive impact he has made on the charity.

Medical Board

The Medical Board is responsible for helping as many children as possible through the International Child Referral Programme.

The Board is comprised of world-leading cardiac surgeons and cardiologists who review the cases of children referred to the charity for emergency treatment. Members of the Board will often go on to operate on the children they accept.

Professor Shakeel Qureshi	Chair
Dr Rachel Andrews	Co-Chair
Dr Aaron Bell	
Dr Alan Magee	
Mr B Sethia	
Ms Carin Van Doorn	
Mr Conal Austin	
Mr Daryl Shore	
Professor David Anderson	
Mr François Lacour-Gayet	
Dr Gavin Wright	
Dr Giselle Rowlinson	
Professor John Deanfield	
Dr Kuberan Pushparajah	



Dr Rachel Andrews

Dr Rachel Andrews is a Consultant Cardiologist at Great Ormond Street Hospital. Over the last 10 years, Dr Andrews has used her specialist knowledge and skills within the field of Paediatric Cardiology to progress the aims and ambitions of Chain of Hope. Both her time and expertise are invaluable.

Nursing Board

The Nursing Board work to guarantee that the nurses involved with Chain of Hope deliver the highest quality of care.

The Nursing Board works with the Overseas Operations Team to develop and implement training programmes where Chain of Hope is building local infrastructure, to monitor the ongoing training of nurses in our international programmes and to recruit and screen all applications from nurses who wish to take part in missions.

Ms Maura O’ Callaghan	Chair	Ms Kirsteen McCulloch
Miss Jackie O’Neill		Mrs Lynda Shaughnessy
Ms Julie Plumridge		

Quality Assurance and Missions Management Committee

The Quality Assurance and Missions Management Committee focus on upholding the high standards of our work.

The Committee is composed of members of the Medical Board, Nursing Board and Chair of Trustees. They assess our overseas missions, review our objectives and outcomes, as well as screen prospective volunteer surgeons and physicians.

Professor Marc de Leval Chair

- Dr Gavin Wright
- Ms Maura O'Callaghan
- Professor Shakeel Qureshi
- Mr Stanley Brown
- Professor Victor Tsang



Professor Marc de Leval

Professor Marc de Leval has practised Paediatric Cardiothoracic surgery for over 40 years and has been a global figure in the development of neonatal and paediatric cardiac surgery. One of his many achievements was the creation of the Heart Transplantation Programme at Great Ormond Street Hospital.

Host Family Panel

The Host Family Panel ensures that children who stay with host families whilst they are in the UK for surgery are placed in a safe and caring environment.

The independent panel employ procedures used in adoption and fostering services to assess prospective host families and make recommendations to Chain of Hope. The panel consists of professionally qualified social workers, paediatric and cardiac nurses and those with personal experience of cardiac surgery and foster care.

- | | | |
|---------------------|-------|--------------------|
| Mrs Mo O'Reilly | Chair | Mrs Julia Fleming |
| Mrs Daphne Henning | | Ms Krisztina Tompa |
| Ms Gabriela Grigore | | Mr Seium Tsegai |

Fundraising Committees

We are privileged to have the support and guidance of two dedicated fundraising committees who take our fundraising to new exciting levels each year.

Corporate Advisory Board

- Mr Ali Jamal
- Mr Carlos Ortega
- His Excellency Mr Fahad Al-Attiya
- Mr Javier de la Rosa
- Mr Leonardo Gonzalez Dellan
- Mr Mehmet Dalman
- Mr Stephen Cilia

Mr Mehmet Dalman

Mehmet Dalman's guidance, ideas and generosity have made a hugely positive impact on Chain of Hope. Mehmet helps to ensure that each year the Gala Ball is a success. He also benefits the charity by elevating our profile with philanthropic individuals and corporate organisations.



Gala Ball Committee

- | | |
|---------------------------|----------|
| Ms Dina Roushdi | Co-Chair |
| Mrs Sherine Sawiris | Co-Chair |
| Mrs Alia Nosseir | |
| Mrs Andrea Collins | |
| Mrs Cherine Helmy | |
| Mrs Hayam Furgler | |
| Mrs Jessica Lemarié-Pirès | |
| Mrs Louka Samy Pacha | |
| Mrs Magda Mayr | |
| Mrs Maria Sukkar | |
| Mrs Mary Soliman | |
| Mrs Monica Thomas | |
| Mrs Najla Nabih | |
| Dr Rita Ishak | |
| Ms Sara Hanna | |
| Ms Susan Sabet | |
| Mrs Sylvia Tadros | |
| Mrs Taya El Zayadi | |
| Mrs Widad Karaket | |



Mrs Sherine Sawiris

Honorary Vice President Sherine Sawiris has been an integral part of the Gala Ball and the charity's work for over 10 years. Sherine plays a key role in guiding the Fundraising Events Team and maximising fundraising and awareness for the charity.

Ambassadors

- Ms Alexandra Burke
- Mr Colin Salmon and Ms Fiona Hawthorne
- Ms Felicity Kendal, CBE
- Lord Jeffrey Archer
- Mrs Jessica Lemarié-Pirès and Mr Robert Pirès
- Mr Lemar Obika
- Mr Omid Djalili
- Mr Orville ‘Shaggy’ Burrell
- Mr Rupert Everett
- Ms Ulrika Jonsson

Jessica Lemarié-Pirès and Robert Pirès

We are delighted that business entrepreneur and model, Jessica Lemarié-Pirès and former France and Arsenal midfielder Robert Pirès have chosen to become ambassadors for Chain of Hope.

Jessica and Robert have supported Chain of Hope for many years. Jessica is a key member of our Gala Ball Committee. Together, she and Robert have contributed enormously to our fundraising activities. We look forward to continuing working with them in their new roles to help more children globally who are suffering from heart disease.



President

Professor Sir Magdi Yacoub OM, FRS

Vice President

Professor Marc de Leval

Honorary President

Her Royal Highness Princess Haya Bint Al Hussein of Jordan

Honorary Vice Presidents

- Princess Chantel of Hanover
- Ms Dina Roushdi
- Countess Noemi Marone Cinzano
- Mrs Sherine Sawiris

Operational Partners

We are proud to collaborate with leading NGOs and hospitals world-wide to save the lives of children and young adults living without access to vital cardiac treatment.

- | | |
|--|---|
| Al Khalidi Medical Centre | La Chaîne de l'Espoir |
| Aswan Heart Centre | Latidos de Esperanza |
| British Airways | Leipzig Heart Centre |
| Bustamante Hospital for Children | Lifetech |
| BVM Medical | Magdi Yacoub Heart Foundation |
| Cardiac Centre Ethiopia | Medical Research Council Gambia |
| Caribbean Heart Menders Association | Narayana Hrudayalaya Health City |
| Centre Hospitalier Universitaire Sainte-Justine, Montréal | Occlutech |
| Children's National Medical Centre, Washington | Palestine Children's Relief Fund |
| Children's Heart Fund of Ethiopia | Riley Children's Hospital |
| Cryolife | Rotary International |
| Digicel Foundation | Royal Brompton and Harefield Hospital NHS Trust |
| Evelina London Children's Hospital, Guy's and St Thomas' NHS Trust | Sagikor |
| Gift of Life Amman | Scanlan International |
| Gift of Life Indianapolis | Shaggy Make a Difference Foundation |
| Gift of Life International | The Harley Street Clinic |
| Great Ormond Street Hospital | The Heart Hospital Baylor Plano |
| Haiti Cardiac Alliance | The Mater Hospital |
| Hospital Bloom | The Usain Bolt Foundation |
| Instituto do Coração | Uganda Heart Institute |
| Johns Hopkins All Children's Heart Institute | World Children's Initiative |



Chain of Hope
South Parade
London SW3 6NP

t: 020 73511978
e: emma@chainofhope.org
Chain of Hope is a registered charity in the UK no.1081384

(CHAIN
OF
HOPE
mending little hearts